



# Pepin Pacer

Pepin County 4-H Newsletter



Extension  
UNIVERSITY OF WISCONSIN-MADISON  
PEPIN COUNTY

October, 2024

Inside this issue:

National 4-H Week	1
Clubs/Meetings	2
Enrollment	5
Achievement Program	8
Opportunities	9
Fall Fun	15
Activity Page	18



### Extension Pepin County Staff

Extension Pepin County conducts educational programs and provides educational information in 4-H youth development, family living education and agriculture.

#### Sky Holt

4-H Youth Development and Community Youth Development  
E-mail: [sky.holt@wisc.edu](mailto:sky.holt@wisc.edu)

#### Mary C. Wood

Family Living Educator  
E-mail: [mary.campbellwood@wisc.edu](mailto:mary.campbellwood@wisc.edu)

#### April Duval

FoodWise Coordinator  
E-mail: [april.duval@wisc.edu](mailto:april.duval@wisc.edu)

#### Gwen Prom

Office Coordinator  
E-mail: [gwen.prom@wisc.edu](mailto:gwen.prom@wisc.edu)

#### Meg Ruff

Program Assistant (during summer)  
E-mail: [meg.ruff@wisc.edu](mailto:meg.ruff@wisc.edu)

#### Address:

740 7th Avenue West  
PO Box 39  
Durand, WI 54736  
Phone: 715-672-5214  
Extension Pepin County website:  
<http://pepin.extension.edu/>  
4-H Online:  
<http://wi.4honline.com/>

Join us in celebrating National 4-H Week! We're proud of our 4-H'ers who are growing into confident leaders. We are celebrating their achievements and how 4-H has made them beyond ready for the future! In celebration of National 4-H Week, October 6-12, the 4-H Parent Leader Federation has provided all Pepin County 4-H youth members with signs to place on their school locker or designated personal area to demonstrate their 4-H pride. During National 4-H Week we would like you to share what 4-H is, how it helps in our community, and get more people involved. Each 4-H family also received two "Join 4-H" cards to share with friends or neighbors to promote 4-H. We also encourage you to wear 4-H attire on Wednesday (or any other/all days) of National 4-H Week. Send us a photo, and we will post it in our next 4-H Pepin Pacer and our website demonstrating your 4-H Spirit. If you have not received your packet in the mail, please let us know!



# Beyond Ready

Every month we will hide a special symbol somewhere in that month's Pacer. If you are the first person to call (715) 672-5214 or email ([gwen.prom@wisc.edu](mailto:gwen.prom@wisc.edu)) the Extension Pepin County and tell us where that symbol is found you will win \$5 and be named in next month's Pepin Pacer as the "4-H Fast Finder".

Good Luck Hunting!

This is this month's symbol :





**DISCOVER**  
4-H CLUBS



**Chippewa 4-H Club**  
Typically meets 2nd Sunday of month.  
Contact Nicki Moline @  
715-442-5371



**Lima Lads & Lassies 4-H Club**  
Typically meets 3rd Sunday of month.  
11:00 a.m., Durand City Hall  
Contact Wendy Brantner @  
715-495-4472

**Yes, 4-H and Extension is open...to ALL people.**

The University of Wisconsin-Madison Division of Extension non-discrimination policy is: Extension does not discriminate in the treatment of individuals in the admission or access to its programs and activities, in the provision of services, or services, or in employment.

Further, Extension will not participate with organizations or in activities which discriminate on the basis of any of the legally prohibited categories of discrimination, which are: race, color, gender/sex, creed, disability, religion, national origin, ancestry, age, sexual orientation, pregnancy, marital or parental status arrest or conviction record, or membership in the national guard, state defense force, or any other reserve component of the military service. Consistent with the Americans with Disabilities Act, persons who need materials in alternative format or other accommodations should write or call the Extension Office. Individuals who need TTY access should call 1-800-947-3529.

**Pepin County 4-H Parent/ Leader Federation Meeting**  
**October 21, 2024**  
**5:30 pm**  
**Government Center, Board Rm #108, Durand**

**Become a leader in Pepin County 4-H and help make our 4-H program stronger. Election of Officers will be held at this meeting. Typically, meetings are held in February, April, June, August, October and December, normally held in the Boardroom at the Government Center in Durand.**



4-H Fast Finder for the Month:  
**Oakley Hurtgen**  
Congratulations for being our  
4-H Fast Finder this month!  
We hope you enjoy the  
Pepin Pacer !

In September, Chippewa 4H Club helped to promote 4H by walking in the Laura Days Parade. The group had a great time handing out whistles, bracelets, suckers, fruit snacks and the very popular cheese sticks to the crowd! We followed up the parade with our regular monthly meeting where we elected our officers for the current 4-H year.



### **Lima Lads and Lassies 4-H Club Notes**

The Lima Lads and Lassies 4-H club ended up their 4-H year with bowling and pizza at Club 10 on August 18th. After all the hustle and bustle of the fair it was nice to get together and just relax, unwind and have fun. The kids had a blast bowling. The youngest of our club members had fun teaching my 3 year grandson how to bowl. The pizza was great and we had great service from the staff at Club 10!

The first community service job of our new 4-H year was serving ice cream at the Brunner's Seed Customer Appreciation Supper on August 29th. Leah, Jacey and Cayden volunteered to do the job along with their moms, Hannah and Jariann. People came early because a storm was brewing. I finished off the evening work so the kids could get home earlier because school had started. It's always nice visiting with fellow farmers.

We had our monthly meeting on September 15th. Business includes re-enrolling in 4-H for the year, electing club officers and setting dates for our monthly meetings for the coming year. Our new officers are Lizzy Wayne-

President, Sami Poeschel-Secretary, Jacey Brunner-Treasurer, Leah Brion-Sunshine Awards. National 4-H Week is October 6-12. We asked the club members to wear their club t-shirts to school on October 9 and take a picture of themselves by their locker or in front of their school. Cedar Crest Ice Cream offers a contest to 4-H clubs to create a unique flavor of ice cream. The top 5 finalists will be awarded an ice cream party and the winner will received \$500. Time to get creative!! Chelsa brought a Halloween craft for the kids to put together. She thought it would be easy peasy but it had a lot of instructions and fancy paper folding to do but the kids and parents figured it out.

Our next meeting will be October 20 at the Durand City Hall at 11:00 .

Submitted by  
Wendy Brantner





### Enrollment Now for the New 4-H Year

Go to <http://wi.4honline.com> to access the system using your family account information. **Please try to re-enroll soon!**



For step by step instructions the 4-H family enrollment guide can be found at :

[https://4h.extension.wisc.edu/files/2020/09/4HOnline.v2.Family.Enrollment.Guide\\_.pdf](https://4h.extension.wisc.edu/files/2020/09/4HOnline.v2.Family.Enrollment.Guide_.pdf)

Contact your 4-H Leader or the Extension Office at (715) 672-5214 for assistance.

### Enroll Today As An Adult Volunteer



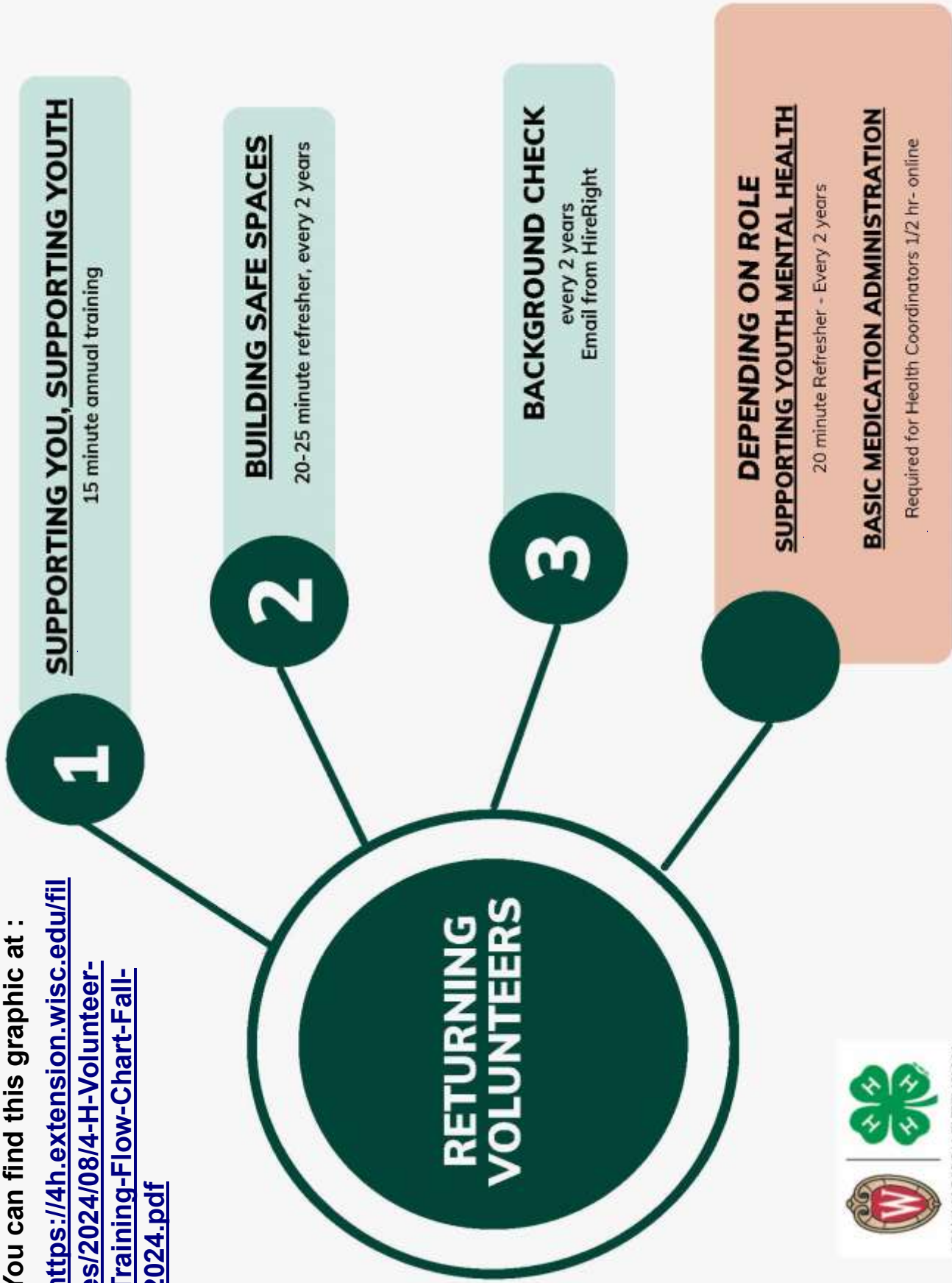
Adult Volunteers include activity leaders, project leaders and anyone else who may lead something even at the club level, must be enrolled. It greatly helps the Youth Protection process to have enrollment information in our computer, plus, you are covered by secondary liability insurance. All adults who wish to work with youth in the 4-H program will be required to go through the screening/trainings. Check out this for more information on how to

**Become a 4-H Volunteer.**

*As a plant spreads its seeds across the land,  
so do you too spread compassion far  
beyond where you're planted.*

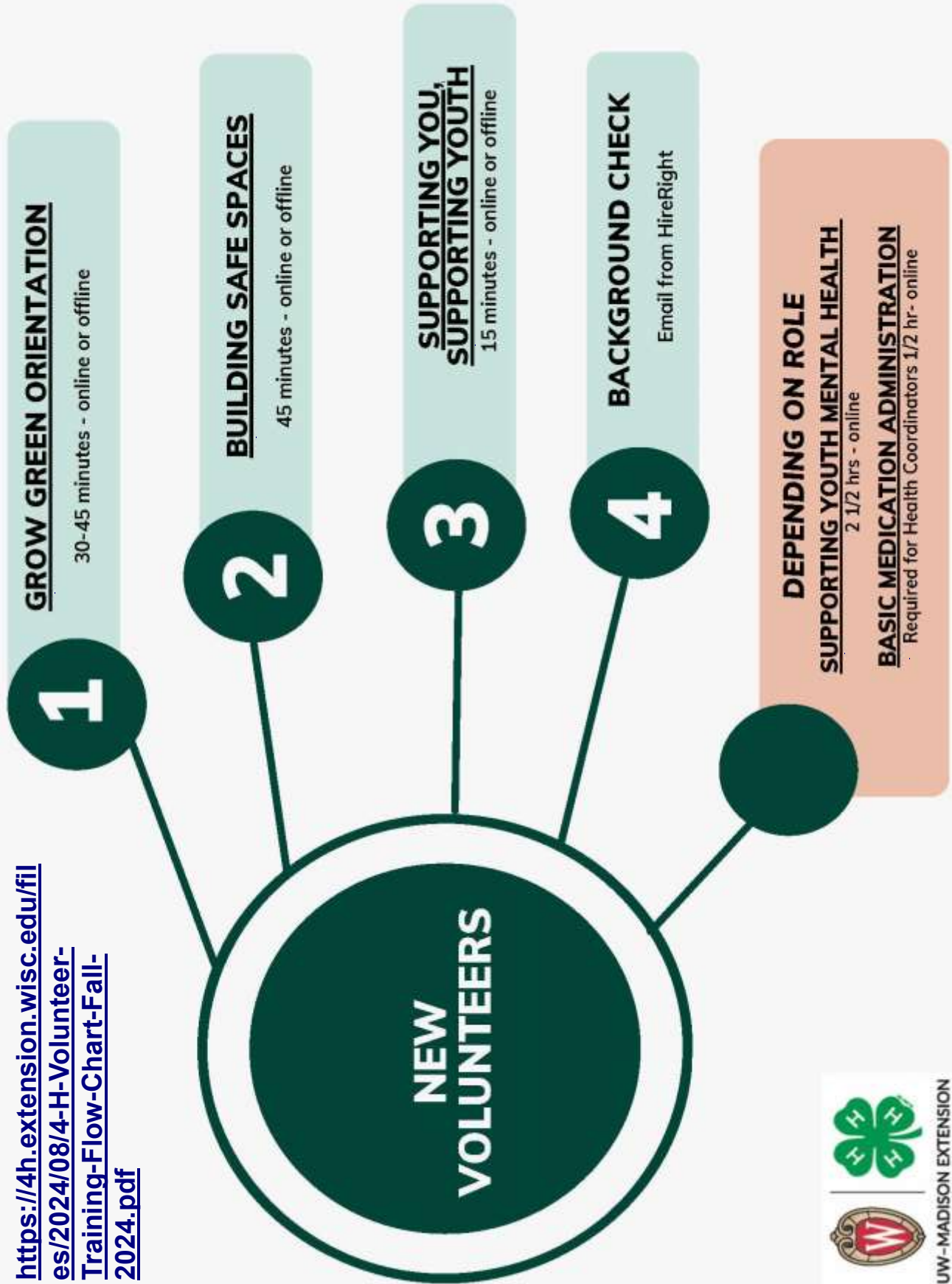


You can find this graphic at :  
<https://4h.extension.wisc.edu/files/2024/08/4-H-Volunteer-Training-Flow-Chart-Fall-2024.pdf>



You can find this graphic at :

<https://4h.extension.wisc.edu/files/2024/08/4-H-Volunteer-Training-Flow-Chart-Fall-2024.pdf>



# National 4-H Week - Statewide Service Project

## IGNITE YOUR SPARK

National 4-H Week 2024  
October 6-12

The Wisconsin 4-H Leadership Council (WLC) invites your club to join us in a statewide service project for National 4-H Week!

Plan a service project during this week to give back to your community and to celebrate National 4-H Week!



UW-MADISON EXTENSION

# 2024 4-H ACHIEVEMENT PROGRAM



**OCTOBER 20  
1-3 PM  
CLUB TEN**

**PIZZA AND PASTA  
BUFFET INCLUDED**

REGISTER TO ATTEND AT:

<https://forms.gle/WczKKWb5dXq58GGe8>





For more information see the 4-H Statewide Opportunities page at: <https://4h.extension.wisc.edu/opportunities/statewide-events-and-opportunities/>

## 2024-2025 Wisconsin 4-H State & National Educational Experiences

What?	When?	Where?	Who?	How much?	How to register:	Adult volunteers:
<b>Arts Camp</b> <a href="https://go.wisc.edu/ArtCamp">go.wisc.edu/ArtCamp</a>	October 5-6, 2024	Upham Woods, Baraboo, WI	Grades 6-8	\$120	Registration via 4Honline open until Sept 16. Capacity is limited.	1 adult / 10 youth + track leads & advisory support
<b>Fall Forum</b> <a href="https://go.wisc.edu/4hfallforum">go.wisc.edu/4hfallforum</a>	November 2-3, 2024	Stevens Point, WI	Grades 7-12 & 4-H Volunteers	\$65 (day only) - \$185 (2 nights)	Registration via 4Honline open now until September 30.	Youth must identify a chaperone or will be assigned to one. All 4-H volunteers welcome to attend
<b>National 4-H Congress</b> <a href="https://go.wisc.edu/4HCongress">go.wisc.edu/4HCongress</a>	November 29-December 3, 2024	Atlanta, GA	Grades 9-12; maximum age 18 on January 1 of program year	\$1500.00 (approximate)	The application process will open in July. Full payment due to the State 4-H office in October.	1 adult / 10 youth + 2 adult advisors selected to support a two-year term
<b>Advanced Space Academy</b> <a href="https://go.wisc.edu/AdvancedSpace">go.wisc.edu/AdvancedSpace</a>	February 15-22, 2025	Huntsville, AL	Grades 10-12	\$2700.00	Registration via 4Honline. opens early September. 36 youth participant minimum.	1 adult / 10 youth + staff leads
<b>ArtsBEAT!</b> <a href="https://go.wisc.edu/ArtBeat">go.wisc.edu/ArtBeat</a>	March 14-16, 2025	Upham Woods, Baraboo, WI	Grades 3-5	\$120.00 (approximate)	Registration via 4Honline. opens early December. Capacity is limited.	1 adult / 10 youth + track leads & advisory support
<b>National 4-H Conference</b> <a href="https://go.wisc.edu/NationalConf">go.wisc.edu/NationalConf</a>	April 11-16, 2025	Washington, DC	Grades 10-12	\$2000.00 (approximate)	Applications available in Nov. Space is limited to 4 or 5 youth, selected through the application process (National limit)	2 adult advisors selected to support a two-year term



Last updated 9/18/24

For more information see the 4-H Statewide Opportunities page at: <https://4h.extension.wisc.edu/opportunities/statewide-events-and-opportunities/>

## 2024-2025 Wisconsin 4-H State & National Educational Experiences

What?	When?	Where?	Who?	How much?	How to register:	Adult volunteers:
<b>Space Camp</b> <a href="https://go.wisc.edu/SpaceCamp">go.wisc.edu/SpaceCamp</a>	May 1-5, 2025	Huntsville, AL	Grades 6-8	\$1300.00 (approximate)	Registration via 4Honline, opens early November. Capacity is limited. Full payment due to the State 4-H office in March.	1 adult / 10 youth + 2 adult advisors selected to support a two-year term
<b>Summer Academy</b> <a href="https://go.wisc.edu/4Hsummeracademy">go.wisc.edu/4Hsummeracademy</a>	June 16-19, 2025	Madison, WI	Grades 8-11	\$600.00 + bussing (if needed) (approximate)	Registration via 4Honline opens in March. Capacity is limited.	1 adult / 10 youth + track leads & advisory support
<b>Citizenship Washington Focus (CWF)</b> <a href="https://go.wisc.edu/CWF">go.wisc.edu/CWF</a>	June or July, 2025 (exact dates tbd; typically a Sat. to Sat.)	Washington, DC	Grades 10-12 (at time of registration)	\$2500.00 (approximate)	Registration via 4Honline opens in January. Capacity is limited.	1 adult / 10 youth + 2 adult advisors selected to support a two-year term
<b>American Spirit East</b> <a href="https://go.wisc.edu/AmericanSpirit">go.wisc.edu/AmericanSpirit</a>	1 week in June or July 2025. TBD	East Coast	Grades 8-10 (at time of registration)	\$2200.00 (approximate)	Registration via 4Honline opens early November. Full payment due in January.	1 adult / 10 youth + Staff Lead

\*Dates are subject to change. All experiences may have participation limitations and/or may require an application process to be considered. UW-Madison Extension staff who are interested in supporting in an advisor role should contact [justin.lieck@wisc.edu](mailto:justin.lieck@wisc.edu)



[To apply for an adult volunteer position:](#)



REGISTRATION NOW OPEN FOR

# YOUTH AS PARTNERS IN CIVIC LEADERSHIP



2024 | OPEN TO AGES 14-18 AND ADULTS 19 OR OLDER



MENTORING,  
NETWORKING,  
AND LEARNING  
OPPORTUNITIES



SCAN FOR MORE INFORMATION

**NOV 8-10, 2024**

UPHMAN WOODS, WISCONSIN DELLS

ANY QUESTIONS? → CONTACT: [JOE.MALDONADO@WISC.EDU](mailto:JOE.MALDONADO@WISC.EDU)

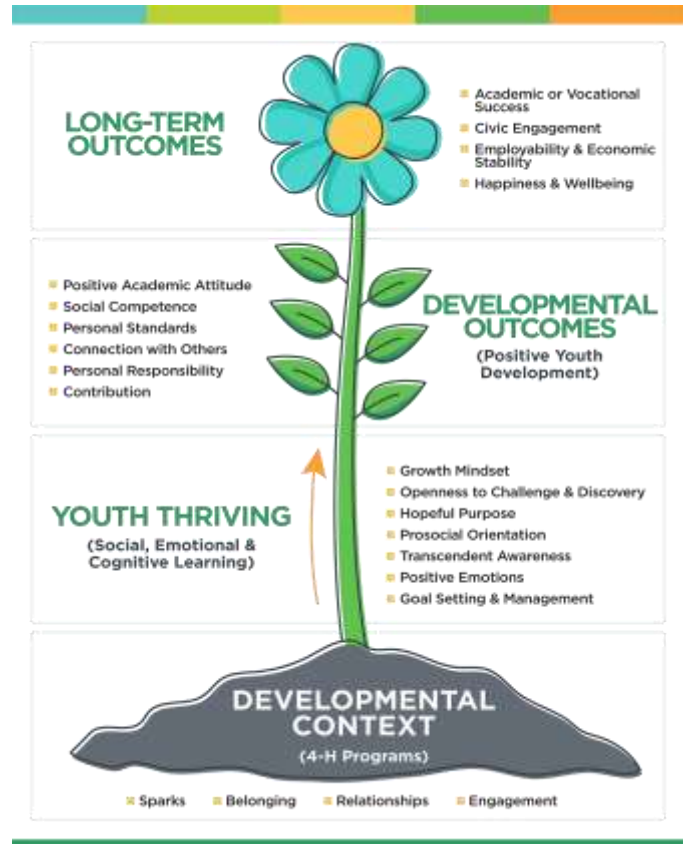


Watch for the survey coming in November. Complete the form for a chance to win a \$25 Gift Card from Fleet Farm!



2024  
Pepin County  
4-H Year End  
Survey

This fall, Wisconsin 4-H will be encouraging members (ages 13-18) to complete a survey about their 4-H experience. The survey will help Wisconsin 4-H to learn about the quality of our programs. The survey will be sent to all Wisconsin 4-H members by e-mail in the first week of November. Youth who complete the survey will be entered into a raffle to win a \$25 gift card! For more information on the 4-H Thriving Model, visit [4-H Thriving Model – Wisconsin 4-H](#). Please keep an eye out for messages and more information about this important survey.



A weeklong East Coast exploration in June. Open to 4-H members in 8-10 grades. Registration opens early November.

For more information see: [go.wisc.edu/AmericanSpirit](http://go.wisc.edu/AmericanSpirit)

**Lead in Your Club**

Everyone in a club work together as a team. No position is more important than another. Adult volunteers support club officers, and club officers support adult volunteers. Presidents, vice presidents, secretaries, treasurers, historians, reporters, and other officers all do their part to keep the club running smoothly. Members play a role in that too. What part of the team do you want to be? For more information see the [Wisconsin 4-H Youth Leader Resources webpage](#)



Northern Wisconsin Beef Producers

# 19th Annual Kids & Cows Family Day

## Saturday October 12, 2024

### at Barron County Fairgrounds Rice Lake, WI

*Education, fun, hands on learning for all ages and experience levels.*



**-NEW THIS YEAR-  
2 SHOW RINGS**

- Registration.....7:30-9:00
- Educational Workshops..... 9:00-12:00
- Lunch/Fun Break.....Noon-1:00  
*Food Stand, AG Olympics & Fitting Contest*
- Showmanship Competition.....Begins at 1:15  
*Showmanship is open to all ages and classes are youngest to oldest.*
- Breed Show.....Following Showmanship

#### For Rules and Entry Information:

[www.wisconsinbeefproducers.com](http://www.wisconsinbeefproducers.com)

Contact Lori Lyons 715-210-0049 or [lalyons4@yahoo.com](mailto:lalyons4@yahoo.com)

Early Entry Fee: \$10 per Kid & \$10 per Head of Cattle

**Register @ FairEntry.com "2024 Kids & Cows"**

Early entry closes on 10-9-2024, No Refunds

Day of Registration Fee: \$15 per Kid



*\*Kids are encouraged to bring their own cattle— kids and adults without will have one provided*

### Cedar Crest Ice Cream Flavor Creation Contest



More information and the entry form are available at:  
[www.cedarcresticecream.com/4H-Flavor-Contest](http://www.cedarcresticecream.com/4H-Flavor-Contest).

### Cedar Crest Ice Cream Contest

Cedar Crest Ice Cream is looking for a new flavor from Wisconsin 4-Hers again! This year's contest will kick off September 1 and entries will be accepted until November 15.



# 4-EVER GREEN




Proud  
**ALUM**  
 Wisconsin 4-H

### Proud To Be



### WISCONSIN 4-H ALUMNI

Are you a proud 4-H Alumni? Share your 4-H story to help inspire the next generation of leaders, win cash rewards for your county and be entered into a random prize drawing!

SCAN THE CODE AND SHOW YOU ARE 4-EVER GREEN



# 30 Days of Fall Fun

© 2019 RealLifeAtHome.com

<p><i>Make</i> hot chocolate 1</p>	<p>Go for a hayride 2</p>	<p>Visit a farmers market 3</p>	<p><b>BAKE AN APPLE PIE</b> 4</p>	<p>Visit an apple orchard or pumpkin patch 5</p>	<p><b>Make s'mores</b> 6</p>
<p>Make a fall-themed craft or project 7</p>	<p><b>MAKE A BATCH OF CHILI</b> 8</p>	<p><b>Make a pinecone bird feeder</b> 9</p>	<p>Visit a local festival 10</p>	<p><b>JUMP IN A PILE OF LEAVES</b> 11</p>	<p><i>Drink</i> apple cider 12</p>
<p>Borrow a fall book from the library 13</p>	<p><i>Eat a piece of</i> pumpkin bread 14</p>	<p>Build a bonfire 15</p>	<p>Make a list of things you're thankful for 16</p>	<p><b>Attend a football game</b> 17</p>	<p><i>Bake</i> muffins 18</p>
<p>Plant fall flowers or other plants 20</p>	<p>Plant fall flowers or other plants 20</p>	<p><b>MAKE A LEAF RUBBING</b> 21</p>	<p>Have a picnic 22</p>	<p><b>TAKE A DRIVE IN THE COUNTRY</b> 23</p>	<p>Paint or carve a pumpkin 24</p>
<p>Go on a nature walk 26</p>	<p>Go on a nature walk 26</p>	<p>Eat a candy or caramel apple 27</p>	<p>Go for a bike ride or hike 28</p>	<p><b>READ A BOOK OUTSIDE</b> 29</p>	<p><b>WATCH A FALL MOVIE</b> 30</p>
<p><b>MAKE STEW OR SOUP</b> 19</p>	<p>Roast pumpkin seeds 25</p>				



Youth who join 4-H are often excited about the many, many projects they can choose to explore. There are so many Sparks (or things they want to learn about)! Yet, if their Spark doesn't have a local project leader to support their learning, that excitement can turn to questions. They may not know how to get started on their own. Clover to the rescue!! Clover is an online smorgasbord of sparks, interactive activities, and fun. It was created by the National 4-H Council in collaboration with more than 100 universities throughout the United States. And it's FREE and ready for youth, parents, and educators to dive into. **Go to [4-h.org/clover](https://4-h.org/clover)**

**4-H Volunteer Information and Resources - we have provided loads of great information to help you feel comfortable and confident about the basics of 4-H . Explore the Volunteer Resources website at:**

**<https://4h.extension.wisc.edu/resources/volunteer-resources/>**



### Check Out These Event Calendars

The calendars below show events available in surrounding areas and statewide. To filter by county or event type, use the check boxes on the left to narrow the results.

\* To find 4-H specific events see this site

<https://4h.extension.wisc.edu/opportunities/calendar/>

\* To find workshops, classes and other events hosted by University of Wisconsin-Extension see this site:

<https://extension.wisc.edu/events/>

Badger Talks is pleased to present a LIVE series of talks on topics that intend to inspire, delight, and pleasantly distract in a time we are all needing positive experiences. Tune in to hear experts on a variety of interesting and engaging topics. For more information see:

<https://badgertalks.wisc.edu/badger-talks-live/>



Join the Biotechnology Center every Wednesday night for Wednesday Nite @ The Lab! Each week features a speaker teaching about different science topics. These talks are available statewide and will be held on Zoom for the foreseeable future. Come join us!

See <https://science.wisc.edu/wednesday-nite-at-the-lab/> for the schedule of topics and registration links.



VARIETIES



Land Conservation and Planning Department

Spring 2025 Native Tree Sale

The Land Conservation and Planning Department spring tree sale is going to continue to be conducted *online!* If you prefer to pay by check, please contact LeAnna Kavanaugh 715-672-7242 x 146 or [lkavanaugh@co.pepin.wi.us](mailto:lkavanaugh@co.pepin.wi.us)



Simply visit <https://pepinco.square.site/> to view the available inventory and to place your order. Remember, the price listed is per bundle of 25 trees. When entering the quantity wanted, enter the number of *bundles* you want (i.e. Quantity 2 = 50 trees). The website will guide you through payment and checking out. It is as simple as that!

Trees will arrive in late April or early May 2025. You will be notified via postcard and email as to when and where to pick up your order. If you have any questions, please email us at [lkavanaugh@co.pepin.wi.us](mailto:lkavanaugh@co.pepin.wi.us) or call at 715-672-7242 x 146.

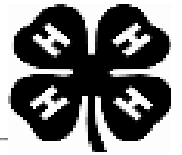
If you are interested in bulk orders, contact the DNR Forestry Department, Justin Kania 715-273-5525. A minimum order of 300 trees and/or shrubs is required.

<u>TREE SPECIES</u>	<u>HEIGHT &amp; SIZE</u>	<u>PRICE PER BUNDLE OF 25</u>
Sugar Maple	12-18" 2 Year Seedling	\$46.00
Red Maple	12-18" 2 Year Seedling	\$43.25
White Oak	12-18" 2 Year Seedling	\$46.00
Swamp White Oak	12-18" 2 Year Seedling	\$46.00
Red Oak	12-24" 2 Year Seedling	\$38.00
Hazelnut	12-18" 2 Year Seedling	\$46.00
Red-Osier Dogwood	12-24" 2 Year Seedling	\$18.75
White Pine	7-15" 2-2 Transplant	\$26.25
Red (Norway) Pine	7-15" 2-2 Transplant	\$26.25
White Spruce	7-15" 2-2 Transplant	\$26.75



Wisconsin

# Activity Page



Wisconsin

