



Pepin Pacer

Pepin County 4-H Newsletter



Extension
UNIVERSITY OF WISCONSIN-MADISON
PEPIN COUNTY

December, 2024

Inside this issue:

Thrive Survey	1
Clubs/Meetings	2
Lego Club	5
Photography Contest	6
Performing Arts	7
Pepin Library Craft	8
4-H Opportunities	9
Year End Survey	12
Fair Board	17
Activity Page	20

Extension Pepin County Staff

Extension Pepin County conducts educational programs and provides educational information in 4-H youth development, family living education and agriculture.

Sky Holt

4-H Youth Development and Community Youth Development
E-mail: sky.holt@wisc.edu

Mary C. Wood

Family Living Educator
E-mail: mary.campbellwood@wisc.edu

April Duval

FoodWise Coordinator
E-mail: april.duval@wisc.edu

Gwen Prom

Office Coordinator
E-mail: gwen.prom@wisc.edu

Meg Ruff

Program Assistant (during summer)
E-mail: meg.ruff@wisc.edu

Address:

740 7th Avenue West
PO Box 39
Durand, WI 54736
Phone: 715-672-5214

Extension Pepin County website:

<http://pepin.extension.edu/>

4-H Online:

<http://wi.4honline.com/>

TELL US ABOUT YOUR
4-H EXPERIENCE



4-H THRIVING MODEL SURVEY

Watch Your Inbox! Survey Closing Soon!

Youth ages 13-18 will receive a link to share your input about your 4-H experiences. Watch your email inbox (the one you use with 4H Online) for your link to participate in the Wisconsin 4-H Thriving Survey! The results will help us evaluate and communicate how 4-H helps young people to learn new things, develop leadership skills, manage goals, set high personal standards, create positive academic attitudes, and other skills that lead to long-term success in life.

The survey was sent to all Wisconsin 4-H members by e-mail in the first week of November and reminders have been sent as well. The survey link will be open until December 13. Youth who complete the survey will be entered into a raffle to win a \$25 gift card. An additional gift card is also sponsored by the Pepin County 4-H Parent Leader Federation

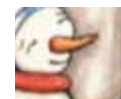
For more information on the 4-H Thriving Model, please visit [4-H Thriving Model - Wisconsin 4-H](#).

Watch for your specific personalized link in the email and help us tell the story of 4-H in Wisconsin!

Every month we will hide a special symbol somewhere in that month's Pacer. If you are the first person to call (715) 672-5214 or email (gwen.prom@wisc.edu) the Extension Pepin County and tell us where that symbol is found you will win \$5 and be named in next month's Pepin Pacer as the "4-H Fast Finder".

Good Luck Hunting!

This is this month's symbol :





DISCOVER
4-H CLUBS



Chippewa 4-H Club
Typically meets 2nd Sunday of month.
Contact Nicki Moline @
715-442-5371



Lima Lads & Lassies 4-H Club
Typically meets 3rd Sunday of month.
11:00 a.m., Durand City Hall
Contact Wendy Brantner @
715-495-4472

Yes, 4-H and Extension is open...to ALL people.

The University of Wisconsin-Madison Division of Extension non-discrimination policy is: Extension does not discriminate in the treatment of individuals in the admission or access to its programs and activities, in the provision of services, or services, or in employment.

Further, Extension will not participate with organizations or in activities which discriminate on the basis of any of the legally prohibited categories of discrimination, which are: race, color, gender/sex, creed, disability, religion, national origin, ancestry, age, sexual orientation, pregnancy, marital or parental status arrest or conviction record, or membership in the national guard, state defense force, or any other reserve component of the military service. Consistent with the Americans with Disabilities Act, persons who need materials in alternative format or other accommodations should write or call the Extension Office. Individuals who need TTY access should call 1-800-947-3529.

Pepin County 4-H Parent/ Leader Federation Meeting
January 4, 2025 (tentatively)
5:30 pm
Hide-A-While, W1505 Albany D, Mondovi

Volunteer in Pepin County 4-H and help make our 4-H program stronger. Election of Officers will be held at this meeting followed by a Holiday party. Typically, meetings are held in February, April, June, August, October and December, normally held in the Boardroom at the Government Center in Durand.



4-H Fast Finder for the Month:

ALLIAH STERRY

Congratulations for being our
4-H Fast Finder this month!

We hope you enjoy the
Pepin Pacer !

Enroll Today As An Adult Volunteer - Pepin County 4-H relies on all types of volunteers, as little or as much time as you can invest is greatly appreciated! To

show your interest in volunteering for Pepin County 4-H complete a survey at:





<https://forms.gle/Zr44jDpHD23Pu5af6>

Or scan the QR code .



UW-MADISON EXTENSION

In Wisconsin 4-H, we value **Building Connections!** Every 4-H member, volunteer, and staff person has a role in making 4-H an inclusive environment for all. Here are some ways you can make a difference:

-  Invite a friend to attend your 4-H club's next activity
-  Talk with your club about goals to be welcoming of all youth
-  Introduce yourself to new families at 4-H events
-  **Proudly display your new "Opportunity for All" 4-H Magnet!**



Learn more about how Wisconsin 4-H is expanding access by exploring this QR code or visit: 4h.extension.wisc.edu > Resources > 4-H is for Everyone

An EEO/AA employer, University of Wisconsin-Madison Division of Extension provides equal opportunities in employment & programming, including Title VI, Title IX, the Americans with Disabilities Act (ADA) & Section 504 of the Rehabilitation Act requirements.



Sunday was not the best weather but we took advantage of the few hours in the morning that is was not pouring rain and got to work setting up the Christmas Decorations in Memorial Park, Tarrent Park and Riverview Park. My 4-H club took on this project about 5 or 6 years ago for the Durand Improvement Group as their membership was dwindling down to just a few people. In the next few months as you are putting up your own decorations if you find some outdoor items that you are no longer going to use please consider donating them to this community project. Please make sure they are in working order and we are not interested in any items that require a blower. Those items need a daily maintenance as to keeping them free of ice and snow to be blown up. Items can be dropped off at the Extension Office in the Pepin County Government Center or contact Wendy Brantner at 715-495-4472 to arrange a pick up. Anyone in the community is welcome to help put up the decorations. We try to do it the first Sunday in November as weather allows.

Submitted by Wendy Brantner



This is our hard working crew. Oakley, Alivia, Jacey, Leah, Nick, Lizzy, Corrina, Drew, Dylan. Missing from photo is Sami and AJ.



LEGO CLUB JANUARY DATES:

JANUARY 6, 13, 20, 27

3:45 - 4:45 PM
IN THE DURAND LIBRARY

ALL YOUTH GRADES 1-5
WELCOME!



WISCONSIN 4-H FOUNDATION KICKS OFF PHOTOGRAPHY CONTEST

The Wisconsin 4-H Foundation Celebrates the Arts Photography Contest is open to any current Wisconsin 4-H member, and the Wisconsin 4-H Foundation is awarding cash prizes. The contest will be held virtually, with photos of all entries submitted electronically. Entries are being accepted now through January 31, 2025.

The contest is broken into three categories:

General Photography

4-H Experience Photography

Clovers on Film

A winner will be chosen in each category with a Best of Show award given to one entry chosen by the judging committee. Category winners will receive a \$50 cash award. The Best of Show entry will receive an additional \$100 cash award. Other photographs may be recognized but will not receive a cash award.

To be eligible for the Wisconsin 4-H Foundation Photography Contest, youth must be a 4-H member enrolled in 4H Online for the 2024-2025 4-H Program Year. Entrants do not need to be enrolled in any specific project to participate.

Entry Information

Entries will be accepted from Friday, November 1, 2024, until midnight on Friday, January 31, 2025.

A photo of the entry and the completed entry form must be submitted through the contest website: <https://wis4hfoundation.org/celebrate-the-arts/>

Each photographer may submit up to one entry in each of the three categories but may submit only one entry in each category.

For official contest rules and requirements and how to submit, please visit: <https://wis4hfoundation.org/celebrate-the-arts/>.

The winning photos from each category and the Best of Show will become the property of the Wisconsin 4-H Foundation. In addition, any entry may be used by the Wisconsin 4-H Foundation to promote the 4-H program and/or to raise funds for the Wisconsin 4-H program. Proceeds from any Celebrate the Arts event or sales will be split evenly with half invested in the Talen Endowment for 4-H Arts Programming and half used for arts programming in the next 4-H program year.

The Wisconsin 4-H Foundation, based in Madison, provides essential funding for 4-H programs throughout Wisconsin. By partnering with individuals, corporations and foundations, the Foundation supports 4-H leadership, youth development and community-building activities throughout the state. Learn more about the Wisconsin 4-H Foundation by visiting www.Wis4HFoundation.org.



**To encourage
PERFORMING ARTS,
the 4-H Parent Leader Federation
will reimburse fully registered
4-H members/volunteers up to \$10
on LIVE performing arts tickets.**

Submit receipts to gwen.prom@wisc.edu
before August 1, 2025.
(Only 1 reimbursement per person)

Here are some suggestions we found but you are not limited to these:



Dec. 5- Pablo Center



Dec 6-15 -
Menomonie Theatre Guild



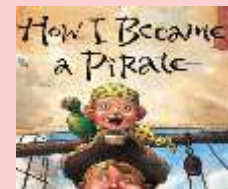
Dec. 6-15 -
CVTG: Pablo Center



Dec. 13-15 & 20-22 -
The Oxford



Dec6-15 - Pablo Center



January 3
The Oxford

Try
these
sites:

- Chippewa Valley Theatre Guild: <https://cvtg.org/>
- Eau Claire Children's Theatre: <https://ecct.org/>
- Mabel Tainter: <https://www.mabeltainter.org/>
- Menomonie Theater Guild: <https://menomonietheaterguild.org/>
- Pablo Center at the Confluence: <https://www.pablocenter.org/events>
- Sheldon Theatre: <https://www.sheldontheatre.org/>

A collection of colorful stars and handprints in various colors (blue, orange, yellow, green) scattered around the text.

DUCT TAPE CRAFTS

**A PEPIN PUBLIC LIBRARY &
PEPIN COUNTY 4-H PROGRAM**

ALL YOUTH ARE WELCOME

A large, stylized orange star with a textured, hand-drawn appearance.

JANUARY 18

11:30 am – 12:30 pm
Pepin Public Library



AmeriCorps



2024-2025 WISCONSIN 4-H

PROGRAMS & EDUCATIONAL EXPERIENCES

Find the 2024-25 Wisconsin 4-H Program Booklet [here!](#)



**4-H
MEANS
GROWTH**



**GROW
MAKE
SERVE
THRIVE**



For more information see the 4-H Statewide Opportunities page at: <https://4h.extension.wisc.edu/opportunities/statewide-events-and-opportunities/>

2024-2025 Wisconsin 4-H State & National Educational Experiences

What?	When?	Where?	Who?	How much?	How to register:	Adult volunteers:
Arts Camp go.wisc.edu/ArtCamp	October 5-6, 2024	Upham Woods, Baraboo, WI	Grades 6-8	\$120	Registration via 4Honline open until Sept 16. Capacity is limited.	1 adult / 10 youth + track leads & advisory support
Fall Forum go.wisc.edu/4Hfallforum	November 2-3, 2024	Stevens Point, WI	Grades 7-12 & 4-H Volunteers	\$65 (day only) - \$185 (2 nights)	Registration via 4Honline open now until September 30.	Youth must identify a chaperone or will be assigned to one. All 4-H volunteers welcome to attend
National 4-H Congress go.wisc.edu/4HCongress	November 29-December 3, 2024	Atlanta, GA	Grades 9-12; maximum age 18 on January 1 of program year.	\$1500.00 (approximate)	The application process will open in July. Full payment due to the State 4-H office in October.	1 adult / 10 youth + 2 adult advisors selected to support a two-year term
Advanced Space Academy go.wisc.edu/AdvancedSpace	February 15-22, 2025	Huntsville, AL	Grades 10-12	\$2700.00	Registration via 4Honline. opens early September. 36 youth participant minimum.	1 adult / 10 youth + staff leads
ArtsBEAT! go.wisc.edu/ArtBeat	March 14-16, 2025	Upham Woods, Baraboo, WI	Grades 3-5	\$120.00 (approximate)	Registration via 4Honline. opens early December. Capacity is limited.	1 adult / 10 youth + track leads & advisory support
National 4-H Conference go.wisc.edu/NationalConf	April 11-16, 2025	Washington, DC	Grades 10-12	\$2000.00 (approximate)	Applications available in Nov. Space is limited to 4 or 5 youth, selected through the application process (National limit)	2 adult advisors selected to support a two-year term



Last updated 9/18/24

For more information see the 4-H Statewide Opportunities page at: <https://4h.extension.wisc.edu/opportunities/statewide-events-and-opportunities/>

2024-2025 Wisconsin 4-H State & National Educational Experiences

What?	When?	Where?	Who?	How much?	How to register:	Adult volunteers:
Space Camp go.wisc.edu/SpaceCamp	May 1-5, 2025	Huntsville, AL	Grades 6-8	\$1300.00 (approximate)	Registration via 4Honline, opens early November. Capacity is limited. Full payment due to the State 4-H office in March.	1 adult / 10 youth + 2 adult advisors selected to support a two-year term
Summer Academy go.wisc.edu/4Hsummeracademy	June 16-19, 2025	Madison, WI	Grades 8-11	\$600.00 + bussing (if needed) (approximate)	Registration via 4Honline opens in March. Capacity is limited.	1 adult / 10 youth + track leads & advisory support
Citizenship Washington Focus (CWF) go.wisc.edu/CWF	June or July, 2025 (exact dates tbd; typically a Sat. to Sat.)	Washington, DC	Grades 10-12 (at time of registration)	\$2500.00 (approximate)	Registration via 4Honline opens in January. Capacity is limited.	1 adult / 10 youth + 2 adult advisors selected to support a two-year term
American Spirit East go.wisc.edu/AmericanSpirit	1 week in June or July 2025. TBD	East Coast	Grades 8-10 (at time of registration)	\$2200.00 (approximate)	Registration via 4Honline opens early November. Full payment due in January.	1 adult / 10 youth + Staff Lead

*Dates are subject to change. All experiences may have participation limitations and/or may require an application process to be considered. UW-Madison Extension staff who are interested in supporting in an advisor role should contact justin.lieck@wisc.edu



[To apply for an adult volunteer position:](#)



4-H members and
volunteers complete
the survey @

[https://forms.gle/FZL3
qrBoS9Jei7V6A](https://forms.gle/FZL3qrBoS9Jei7V6A)

for a chance to win
a \$25 Gift Card
from Fleet Farm!



2023-2024
Pepin County
4-H Year End
Survey

The Wisconsin 4-H State Arts Teams are excited to announce a rebranding initiative that will see the creation of the 4-H Arts Ambassadors. This new structure aims to provide enhanced opportunities for young leaders in the arts, fostering growth and collaboration across the state. When applying for the Arts Ambassador Team, youth will select their area of focus: Art Team, Drama Company (Performance), COMM (Communications, Media, and Marketing) Team, or Drama Company (Technical). While the teams will have dedicated time for creating and promoting the arts in their specific disciplines, they will also collaborate on broader arts events and initiatives. Any active 4-H member in grades 9-13, with a passion for the Arts, is eligible to apply to be a 4-H Arts Ambassador. **Applications will be open November 15 - December 20 in 4HOnline.**



SAVE THE DATES

STATE 4-H LIVESTOCK EVENTS

4-H MEATS JUDGING CONTEST
FEB. 8, 2025

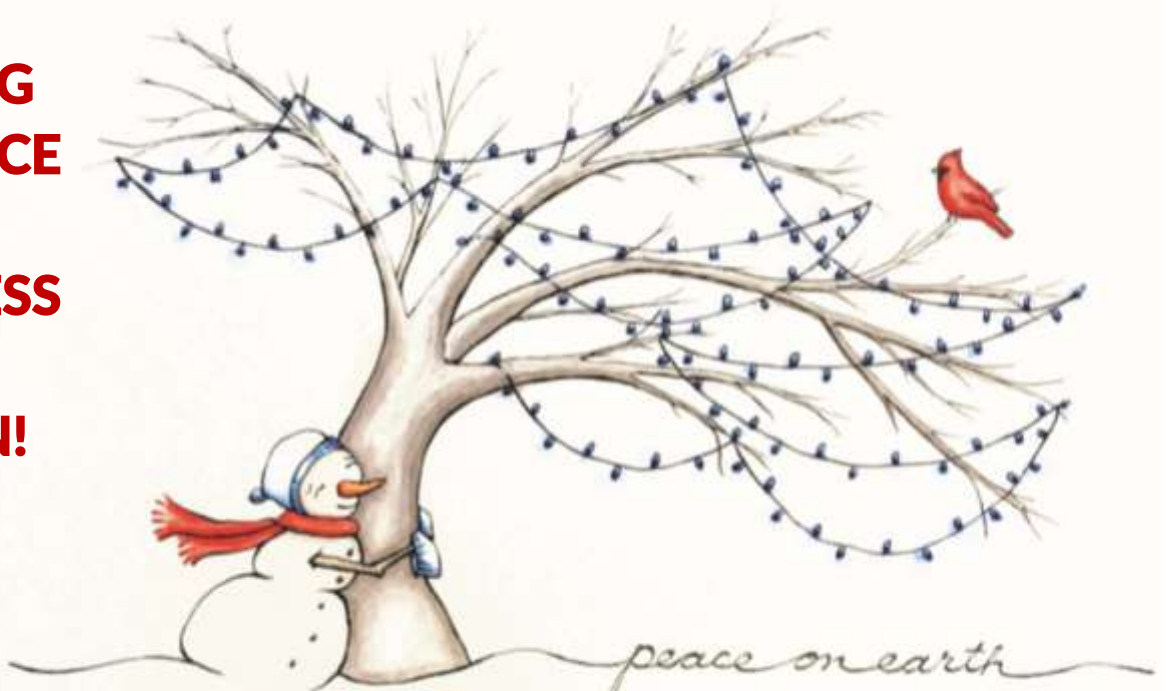
SKILLATHON AND QUIZ BOWL
MARCH 15, 2025

BOTH EVENTS HELD AT THE
UW MADISON CAMPUS



Extension
UNIVERSITY OF WISCONSIN-MADISON

**WISHING
YOU PEACE
AND
HAPPINESS
THIS
SEASON!**



4-H 
GROWS HERE

What is Citizenship Washington Focus?

Citizenship Washington Focus, or CWF for short, is the premier week long 4-H citizenship and leadership experience. CWF brings 4-H delegations from all over the country to stay in Washington D.C., our Nation's Capital! Participants learn about the roles of Senators and Representatives in the United States' government and how these parts work together to form an effective Congress. Additionally, youth get to see and experience government in action by meeting with their State's members of Congress and watching a House of Representatives meeting. Prepare for an empowering experience filled with skill building workshops, guided D.C. area tours, and hands on learning opportunities designed to inspire and equip the next generation of leaders to create change and impact their communities using the principles of democracy. Registration will be done through 4HOnline. It is open December 20, 2024—January 15, 2025.



Wildlife WHEP Wisconsin 4-H Wisconsin 4-H Forestry

Website:

<https://4h.extension.wisc.edu/opportunities/projects/outdoor-education/>

Email: wi4hwildlifeforestry@gmail.com



Participation in wildlife & forestry activities is open to all Wisconsin 4-H club members. You can be enrolled in any 4-H project and participate in the activities.

Backyard & Back 40 "Kits-To-Go" Activity Boxes: Check them out at the 4-H Fall Forum. Can't make it there, just send an email. There are 15 different Backyard & Back 40 wildlife & forestry related programs. Each program offers many different hands-on educational opportunities for kids of all ages & adults, too. Programs are presented by your own 4-H youth & adult leaders. We'll provide instructions for you to build your own hands-on activity boxes. Email: wi4hwildlifeforestry@gmail.com

Wildlife & Woods Explorations - Virtual Sessions: For youth K-5 and elementary grade.
Wildlife & Woods Careers & Competition - Virtual Sessions: Designed for middle and high school youth. Virtual sessions begin in late January. Let us know if you are interested in viewing recorded sessions. Email: wi4hwildlifeforestry@gmail.com for more information.

4-H Wildlife & WHEP & Wisconsin 4-H Forestry Contests: Study guides are available in January. Statewide competition is in late March, so start preparing soon. Study guides cover what's on the test.

Check out some Upcoming Programming from

Wisconsin Distance Learning – Wisconsin 4-H



WISCONSIN 4-H SPACE CAMP

May 1-5, 2025 Huntsville, Alabama

OPEN TO YOUTH GRADES 6-8

Get involved in:

- Simulated Space Missions
- Learning and using Space Simulators
- Building and launching your own model rockets
- Realspace training simulation etc.

Registration open from Nov 15 - Dec 15 via 4HOnline



Ring the bell opportunities at the Durand Fresh Market run through Tuesday, December 24, 2024. If you are interested in helping raise funds while spreading some Holiday cheer and goodwill. Click on the link below:

<https://www.registertoring.com/zip.aspx>

The holiday season is nearly upon us, and there's no better time to spread joy and support the 4-H mission of preparing youth to be Beyond Ready! As you make your wish list (and check it twice!), don't forget that by shopping with 4-H partners, a portion of your purchases will help empower young people to shine today and in the future.



\$5 from each pair will go to 4-H

Crayola™

FLOWERS

10% of your purchase will go to 4-H



6% will be donated to 4-H



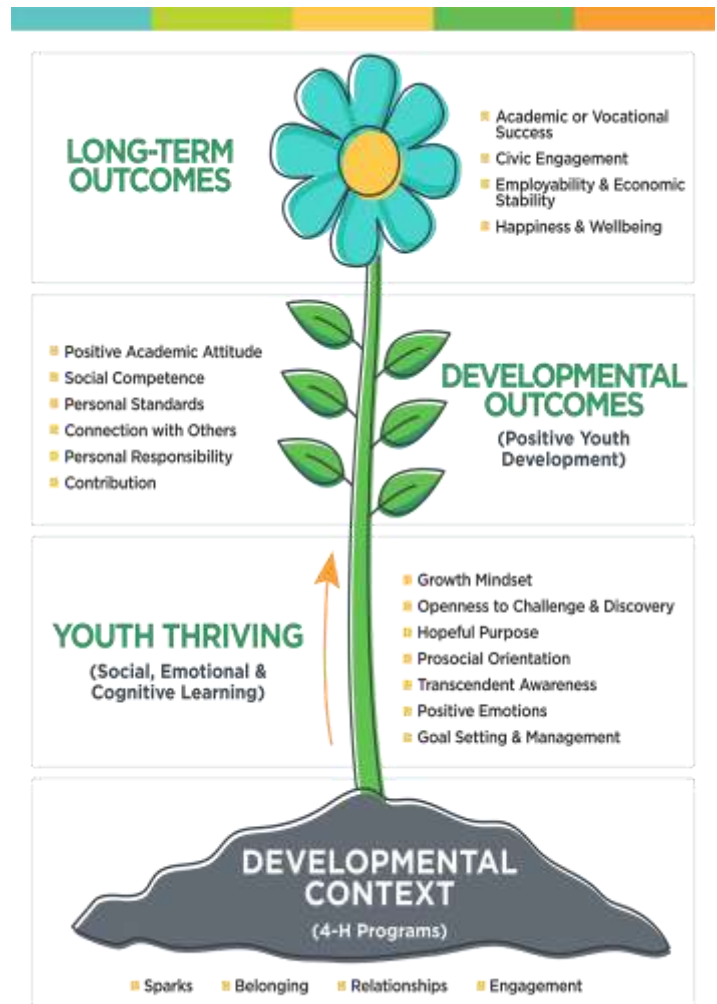
Purchase a ornament and proceeds going to 4-H OR

purchase a Paper Clover (11/29 -12/15) to help fund scholarships and leadership opportunities

Wisconsin 4-H is encouraging members (ages 13-18) to complete a survey about their 4-H experience. The survey will help Wisconsin 4-H to learn about the quality of our programs. The survey was sent to all eligible Wisconsin 4-H members by e-mail in the first week of November. Youth who complete the survey will be entered into (2) raffles to win \$25 gift cards donated by WI 4-H and Pepin County 4-H Parent Leader Federation.

For more information, visit [4-H Thriving Model – Wisconsin 4-H](#).

Please watch for emails with specific links to our members about this important survey.



4-EVER GREEN




Proud
ALUM
Wisconsin 4-H

Proud To Be



WISCONSIN 4-H ALUMNI

Are you a proud 4-H Alumni? Share your 4-H story to help inspire the next generation of leaders, win cash rewards for your county and be entered into a random prize drawing!

SCAN THE CODE
AND SHOW YOU ARE
4-EVER GREEN





Junior Fair Board Director

Buffalo County Fair in Affiliation with Pepin County

Purpose of Junior Fair Board Director: To serve as a representative for youth participants involved in the fair and to be involved in the process of making the fair a successful event each year.

Qualifications: Youth should reside in Buffalo or Pepin Counties, or neighboring counties if they are involved in Buffalo or Pepin County youth clubs. Clubs include 4-H, FFA, MCYC, Boy Scouts, or Girl Scouts.

Term: 2 years, which includes 2 fairs.

Stipend: \$150/yr and \$15 per meeting

Responsibilities:

- Attend meetings 8 times a year. These meetings are held on the second Wednesday night of the month.
- Attend scheduled work nights around fair time. (Usually 3-4)
- Attend all 4 days of the Buffalo County Fair.
- Work 1 shift in the fair office during the fair.
- Work 2 additional assigned duties during the fair. (ie. Selling tickets at track, working at the meat animal sale, etc.)
- Contribute to the planning of the fair by serving on 2 or more committees.
- To receive the stipend, 70% of all meetings, 50% of all work nights and 100% all other responsibilities must be met.

Application Process: Email the fair board secretary at lisakees@yahoo.com with a paragraph on why you want to be involved with the fair board and what skills you have that will benefit our fair.



Youth who join 4-H are often excited about the many, many projects they can choose to explore. There are so many Sparks (or things they want to learn about)! Yet, if their Spark doesn't have a local project leader to support their learning, that excitement can turn to questions. They may not know how to get started on their own. Clover to the rescue!! Clover is an online smorgasbord of sparks, interactive activities, and fun. It was created by the National 4-H Council in collaboration with more than 100 universities throughout the United States. And it's FREE and ready for youth, parents, and educators to dive into. **Go to 4-h.org/clover**

4-H Volunteer Information and Resources - we have provided loads of great information to help you feel comfortable and confident about the basics of 4-H . Explore the Volunteer Resources website at:

<https://4h.extension.wisc.edu/resources/volunteer-resources/>



Check Out These Event Calendars

The calendars below show events available in surrounding areas and statewide. To filter by county or event type, use the check boxes on the left to narrow the results.

* To find 4-H specific events see this site

<https://4h.extension.wisc.edu/opportunities/calendar/>

* To find workshops, classes and other events hosted by University of Wisconsin-Extension see this site:

<https://extension.wisc.edu/events/>

Badger Talks is pleased to present a LIVE series of talks on topics that intend to inspire, delight, and pleasantly distract in a time we are all needing positive experiences. Tune in to hear experts on a variety of interesting and engaging topics. For more information see:

<https://badgertalks.wisc.edu/badger-talks-live/>



Join the Biotechnology Center every Wednesday night for Wednesday Nite @ The Lab! Each week features a speaker teaching about different science topics. These talks are available statewide and will be held on Zoom for the foreseeable future. Come join us!

See <https://science.wisc.edu/wednesday-nite-at-the-lab/> for the schedule of topics and registration links.

Sign up for free Smoke Alarms from the **American Red Cross**

The American Red Cross Home Fire Campaign helps save lives by installing free smoke alarms in homes that don't have them and by educating people about home fire safety.

Strobe lights and bed shakers also available for households with deaf or hard of hearing individuals.





Activity Page



Find your way through the maze to reach the snowflake in the center.

