



Pepin Pacer

Pepin County 4-H Newsletter



Extension
UNIVERSITY OF WISCONSIN-MADISON
PEPIN COUNTY

July, 2025

Inside this issue:

Clubs/ Meetings	2
4-H Local Activities	7
Performing Arts	9
Shooting Sports	10
4-H Story	12
Fair and Animal News	13
Other	21
Activity Page	23



Extension Pepin County Staff

Extension Pepin County provides educational programs and information in 4-H, youth development, and human development and relationships.

Sky Holt

4-H Youth Development and
Community Youth Development
E-mail: sky.holt@wisc.edu

Mary C. Wood

Family Living Educator
E-mail: mary.campbellwood@wisc.edu

April Duval

FoodWise Coordinator
E-mail: april.duval@wisc.edu

Gwen Prom

Office Coordinator
E-mail: gwen.prom@wisc.edu

AmeriCorps

Payton Freund

Sarah Torbert

Area 9 Extension Director
E-mail: sarah.torbert@wisc.edu

Address:

740 7th Avenue West
PO Box 39
Durand, WI 54736
Phone: 715-672-5214

Extension Pepin County website:

<http://pepin.extension.edu/>

4-H Online:

<http://wi.4honline.com/>



Every month we will hide a special symbol somewhere in that **month's Pacer**. If you are the first person to call (715) 672-5214 or email (gwen.prom@wisc.edu) the Extension Pepin County and tell us where that symbol is found you will win \$5 and be named **in next month's Pepin Pacer as the "4-H Fast Finder"**.

Good Luck Hunting!

This is this month's symbol :



"The University of Wisconsin-Madison Division of Extension provides equal opportunities in employment and programming in compliance with state and federal law. You may request an interpreter, materials in an alternative language or format, or other services to make programming more accessible, by contacting our office several weeks prior to the event date if possible. There's no added cost to you for these services."



Pepin/Buffalo 4-H Shooting Sports Club

Typically meets Monday & Tuesday nights
@ 6:30 p.m. in Pepin Sportsman's Club,
January-March. For 3rd Graders and older.

Contact Nicole Schonke @
612-644-7525

Chippewa 4-H Club
Typically meets 2nd Sunday of month.
Contact Nicki Moline @
715-442-5371

Lima Lads & Lassies 4-H Club
Typically meets 3rd Sunday of month.
11:00 a.m., Durand City Hall
Contact Wendy Brantner @
715-495-4472

Community Health Youth Leaders (CHYL)

Durand /Arkansaw In-School Club

6th - 8th Graders

Typically meets (2) Fridays a month
in Room #009 during lunch

Contact Sky Holt @
715-279-7677



Pepin County 4-H Parent/ Leader Federation Meeting
August 14, 2025 @ 5:30 pm

Pepin County Government Center, Boardroom Rm#108

Volunteer in Pepin County 4-H and help make our 4-H program stronger.

**Typically, meetings are held in February, April, June, August,
October and December, normally held in the Boardroom at the
Government Center in Durand.**

Call the Extension Office for more information.



4-H Fast Finder for the Month:

MYA MOLINE

Congratulations for being our
4-H Fast Finder this month!

We hope you enjoy the
Pepin Pacer !

Happy Birthday!

July 16 – Torsten Davidson – Chippewa Club

July 18 – Jacey Bauer – Lima Lads & Lassies

July 18 – Leah Brion – Lima Lads & Lassies

July 27 – Oakley Hurtgen – Lima Lads & Lassies

Yes, 4-H and Extension is open...to ALL people.

The University of Wisconsin-Madison Division of Extension non-discrimination policy is: Extension does not discriminate in the treatment of individuals in the admission or access to its programs and activities, in the provision of services, or services, or in employment.

Further, Extension will not participate with organizations or in activities which discriminate on the basis of any of the legally prohibited categories of discrimination, which are: race, color, gender/sex, creed, disability, religion, national origin, ancestry, age, sexual orientation, pregnancy, marital or parental status arrest or conviction record, or membership in the national guard, state defense force, or any other reserve component of the military service. Consistent with the Americans with Disabilities Act, persons who need materials in alternative format or other accommodations should write or call the Extension Office. Individuals who need TTY access should call 1-800-947-3529.

VOLUNTEER



Enroll Today As An Adult Volunteer

Pepin County 4-H relies on all types of volunteers, as little or as much time as you can invest is greatly appreciated! To show your interest in

volunteering for Pepin County 4-H complete a survey at: <https://forms.gle/Zr44jDpHD23Pu5af6>

Or scan the QR code:



May was a quiet month for the Lima Lads & Lassies as we didn't have a meeting or any other extra activities but we sure made up for it in June.

We had our June monthly meeting on June 1 instead of the 3rd Sunday because of a community service project we were doing. At the meeting we filled dairy promotion bags with a coloring book, crayons, pencil, spoon, chocolate straw, sticker, kid tattoo, toothbrush, milk information flyer and a cup to hand out to kids at the Pepin County Dairy breakfast which was hosted by one of our 4-H families at Brunner's Hillside Dairy.

At this meeting we also welcomed a new family to our club. Harper Biederman along with her dad, Bruce decided to join in our fun. Welcome to the Club Harper!

The following Sunday was the Funniest parade in Durand. The Pepin County Dairy Promotion council pulled the dairy wagon through the parade and asked our club to walk along and hand out cheese sticks to the crowd. The whole Brunner family, Joel, Carrie, Mara, Jacey and Corrina, walked in the parade because they hosted the dairy breakfast. Harper, Bruce and Wendy joined in the fun and helped hand out the 1600 cheese sticks.

Wendy was contacted by someone from the community and asked if our club would be willing to weed the landscape around The Homeplace. Our club has done this in the past. The Monday after Funfest Wendy, Alivia, Oakley and their dad, Darrin, ventured to The Homeplace and pulled weeds for an hour and a half.

Ron Kaempf, a master woodworker, volunteered to mentor 2 kids to make a project for the fair again this year. Kayden Bauer took him up on that offer. They spent 2 afternoons working together to create a beautiful bench to put by the pool. Ron mentored Nick Brion on a wood working project also. This is a target shooting stand. They had so much fun working together. I can't wait to see these exhibited at the Buffalo/Pepin County Fair.

June's activities ended with the Pepin County Dairy Breakfast held this past weekend at Brunner's Hillside Dairy. Their whole family did a terrific job presenting their farm and welcoming the community and surrounding communities to see what they do day in and day out to provide great wholesome dairy products to fuel and grow our bodies! Wendy provided a variety of games and activities for kids to do while at the farm. AJ was at the farm bright and early to help me set everything up. Hannah and Nick came for the first shift to hand out the kids bags that we had filled, pass out cookies that were baked by Batter & Bowls, and offer water and chocolate milk to kids and their parents as they enjoyed the games. Harper and Bruce came and manned the second shift. It was a very hot morning on the farm but thankfully there was a good wind blowing, then some cloud cover and a little bit a rain.





LEGO CLUB JULY DATES:

JULY

1, 8, 15, 22

3:45 - 4:45 PM

IN THE DURAND LIBRARY

ALL YOUTH GRADES K-5
WELCOME!



JOIN US!



**THE PEPIN PUBLIC
LIBRARY & PEPIN COUNTY
4-H ARE PUTTING ON
AWESOME PROGRAMS
THIS SUMMER:**

JULY 9: REFORMED PAINTINGS
(2:00 - 3:00PM)

JULY 23: LEGO CHALLENGES
(2:00 - 3:00PM)

AUGUST 16: 3D PENS
(11:30 AM - 12:30 PM)

AUGUST 20: BEE HOUSES & HONEY
(2:00 - 3:00 PM)

**AT PEPIN PUBLIC LIBRARY
ALL YOUTH ARE WELCOME!**



**To encourage
PERFORMING ARTS,
the 4-H Parent Leader Federation
will reimburse fully registered
4-H members/volunteers up to \$10
on LIVE performing arts tickets.**

Submit receipts to gwen.prom@wisc.edu
before August 1, 2025.
(Only 1 reimbursement per person)

Here are some suggestions we found but you are not limited to these:



The Pied Piper
July 17 & 18
The Oxford

The Wizard of Oz
June 19 & 20
RCU Theatre



Wicked Sing-Along
July 29
RCU Theatre

Wild World of Animals
August 12
RCU Theatre



Try
these
sites:

Chippewa Valley Theatre Guild: <https://cvtg.org/>

Eau Claire Children's Theatre: <https://ecct.org/>

Mabel Tainter: <https://www.mabeltainter.org/>

Menomonie Theater Guild: <https://menomonietheaterguild.org/>

Pablo Center at the Confluence: <https://www.pablocenter.org/events>

Sheldon Theatre: <https://www.sheldontheatre.org/>

The Wisconsin 4-H Shooting Sports program provides youth in shooting sports the opportunity to develop life skills and practice safety procedures, while having fun and making new friends. Adults find that shooting sports leadership and instructor roles can be extremely rewarding. Families are invited to explore the shooting sports opportunities at the county, state and national levels. Families can learn much more about shooting sports at our web pages by clicking here: [Explore 4-H Shooting Sports.](#)

State 4-H Invitational Shooting Sports “Fun Shoots”

All 4-H Shooting Sports members participating in their county shooting sports training program are eligible to register and compete in the annual statewide events which start in March and end by August. Junior, Intermediate and Senior divisions are offered at all events. For families new to these fun shoots, each shoot has a contact person for your questions, or you can contact [Doug-las.Thompson@wisc.edu](mailto:Douglas.Thompson@wisc.edu).

New families are encouraged to have their shooting sports 4-H members participate, or come and observe and ask questions. These events are very family friendly so be sure to bring grandparents too. There are even a few youth/adult team events. Click [Events](#) for dates and locations. Scores from older 4-H members are considered for team eligibility at the National Championships in June the following year at Grand Island, Nebraska. Visit: [National Information](#).

Adult Certification Workshop Set for Saturday, September 13, 2025

Marshfield is the annual fall location for volunteers to attend a certification workshop. Your county

4-H Shooting Sports program always welcomes adults to get involved in teaching shooting sports. Ask

your county 4-H Educator or the 4-H Shooting Sports leaders in your county about becoming a

certified instructor. For 2026 a February certification will be offered at West Bend, with spring

certification workshops scheduled for Eau Claire and Green Bay. Registration for September 13 is now

open. Click [certification workshops](#) for

details on upcoming trainings when those dates become available.

RAINBOW RIDDLES

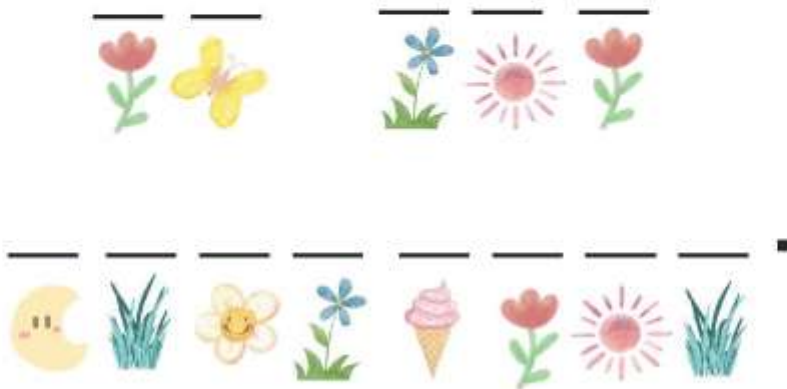
A	B	C	D	E	F	G	H	I	J	K	L	M
												
N	O	P	Q	R	S	T	U	V	W	X	Y	Z
												

Can you decode these Rainbow-Themed Riddles? Use the key to break the code.

1 What bow can't be tied?



2 Why did the rainbow read an encyclopedia?





TELL YOUR 4-H STORY YOUR WAY



Presentation/Format (pick one):

- ~ Booklet (handwritten or computer generated)
 - i. One sided pages only
 - ii. Maximum 8 written pages, maximum 10 additional pictures/drawing pages
- ~ Power Point – maximum 15 slides or maximum 8 minutes
- ~ Video - MP4 format with maximum 8 minutes run time
- ~ Traditional record book



Submitted on a
USB drive with
your name and
grade on it

Age groups

Cloverbud (Format can be halved – 4 pages, 5 additional; 7 PPT slides; 4 minute video)
3rd – 5th grades; 6th – 8th grades; 9th – 13th grades

Record Books will be judged on content (1 through 5 of the criteria below) as well as creativity.

Have FUN and start your goals now!

Include in your story:

1. 4-H Member Profile – (Name, club, grade, picture(s) of you)
2. Your 4-H Goals (you can select project(s), it can be taking a leadership role/expanding a leadership role(s), it can be travel opportunities, community service, etc.)
 - a. What do hope to learn?
 - b. What do you plan to accomplish?
3. Your Reflections – the BIG picture

Examples:

 - a. What did you learn?
 - b. How did you grow?
 - c. What would you do different?
 - d. How has being a 4-H member helped you set goals and develop new interests?
 - e. How has 4-H influenced your future goals (personal and/or career)?
4. Outreach - How did you help your club and/or county grow? (Community service, team work, leadership, etc.)
5. Value
 - a. Money made, personal time, personal value, etc.
 - b. What are you most proud of and why?
6. Parent and/or 4-H Club Leader Statements – Please have your parent and/or 4-H Club Leader write a few sentence about their thought of your 4-H journey this year. The statement should be signed by the Parent or 4-H Club Leader.

REMINDER

For Adults Participating In the County Fair

Kids are watching you today.
They are learning from your words
and examples.

Winning is NOT the most important thing
that happens at this event.

Focus on their efforts, not the outcomes.

Focus on the youth, not the ribbons or
awards.

No matter what the exhibitor's project is,
the focus of the volunteer, parent, or guardian
should be on the YOUTH.



What Kids Need to Know About Fair Judging

You have worked really hard on a project and done your very best. You enter items in the fair and eagerly wait to find out what the judge thinks of your efforts. Sometimes it's good news; sometimes it's disappointing. Watching the judging process should give you an idea of what you should keep on doing and where you might improve. Exhibitors, parents and others are encouraged to watch the judging. However, please do not interfere with the judge or department workers. A good judge will take the time to explain why he/she is placing a grouping in that order. If you still have questions about the judging, wait until the judge is through and then ask politely if he/she could explain a little further. Remember though, the judge's decision is final.

There are four types of judging that take place at the Fair:

Danish Judging is used for most departments and classes in the junior division. All the entries in one lot are arranged together so the judge can decide what placing to give them. Each of the entries will get a placing, but there is a limit to the number of blue, red and white ribbons that can be given. Please refer to Chapter ATCP 160.91, subchapter V - Judging regulations, for an explanation that states how many placings the judge can give in a class.

Regular Judging is used in all open classes and in a few classes in the junior division. This means that only four placings can be given in each lot number (1 blue, 1 red, 1 white and 1 pink). If there were more than four entries, the other entries would not receive a placing.

Conference Judging means that the entire group of exhibitors for a specific lot meets with the judge, and the judge briefly discusses each exhibit with exhibitors. The judge will place each exhibit comparing it to the standard of perfection and the quality of the other exhibits according to the Danish system.

Face-to-face Judging means that the exhibitor must be present at the time of judging and talk to the judge about his/her entry. This system is used for the Cloverbud and Exploring departments, and is designed to make the judging experience a positive learning experience for the young exhibitor.

***Remember**, the most important thing is how *YOU* feel about your project and what you have learned. If you did your best, you can be proud of yourself and the experience you gained!



It is good to review the junior rules, livestock rules, and the rules for each department you participate in to be sure you are prepared!

—2025 Summer Pre-Fair Events—

CLOTHING REVUE

Wednesday, July 16 - Marten Center

DOGS, CATS, SMALL ANIMALS & EXOTICS

Saturday, July 19 - Fairgrounds

HORSE SHOW

Saturday, July 26 - Midnight Riders Arena



4-H Livestock Showmanship Clinic

JULY 20, 2025

6:00 P.M.

GEORGE FAMILY FARM

N5932 Albany D, Mondovi, WI

Online registration:

<https://forms.gle/NNvGoGzNTDEVy14q6>

Bring your own lawn chair.



- Learn basic showmanship techniques and skills. Interactive training with beef, sheep, swine, and goats.
- Appropriate footwear required to participate.
- Open to youth who just completed 3rd grade through 1 year past High School.

MEAT ANIMAL
EDUCATIONAL CREDIT



UW-MADISON EXTENSION



DUE JULY 1

Online – a youth exhibitor will annually complete 3 interactive online training modules and corresponding quizzes

Online Exam – upon passing an online exam, the youth exhibitor can achieve more than 1 year of certification

YQCA Training Cost

\$12/person/year for the online modules
\$3/person/year for the Instructor-Led trainings

Access YQCA Trainings

Login to view the **Help Video** or **Help Document** Web-Based Training and follow the step by step instructions. **Upon completion of the online training, please submit the proof of completion certificate to gwen.prom@wisc.edu**

MEAT ANIMAL EDUCATIONAL CREDIT

All meat animal exhibitors planning to exhibit at the Buffalo/Pepin County Fair must earn one meat animal educational credit in addition to the YQCA training during the project year. Following the session, exhibitors must complete the Meat Animal **Educational Credit online form**. Submission of this completed form is due by the Friday before the Fair begins. Check out the **Rules & Forms** under Exhibitor Info on the **Buffalo County Fair website**. Animal Sciences Virtual Education Session are available on the **Wisconsin Youth Livestock Program's YouTube channel**. Archived webinars can be found **here**.

Bio-Security Workshop



Fulfill the Meat Animal Educational Credit and join us for an engaging and informative bio-security workshop open to all with an emphasis on county fair animal exhibitors.

Pre-register at:

<https://forms.gle/SWbEycv1WMMBxgEd6>

June 30, 2025

6:00pm - 7:00pm

**Buffalo County Courthouse,
3rd floor conference room**

Exhibit Entry/Release Times

Wednesday, July 30, 2025

6:00 p.m.— 8:00 p.m. Early Swine Weigh-in (*swine may be brought to the fairgrounds for early weigh-in*)

4:00 p.m.—8:00 p.m. Poultry, Rabbits and Non-animal exhibit check-in
Market Chickens will be weighed on Wednesday

Thursday, July 31, 2025

7:00 a.m. - 12:00 p.m. Meat Animal Weigh-ins

- Beef
- Sheep
- Swine
- Meat Goats

7:00 a.m.-2:00 p.m.

- Dairy
- Rabbits
- Non-market Beef, Sheep, & Goats

9:00 a.m. - 2:00 p.m.

Non-animal exhibits may be brought to the Fair during this time

2:00 p.m.

All Exhibits must be checked in and placed in appropriate area. No Exceptions!

9:00 a.m.

Cloverbud and Exploring judging begins

2:00 p.m.

Poultry judging begins

5:00 p.m.

Thursday judging begins

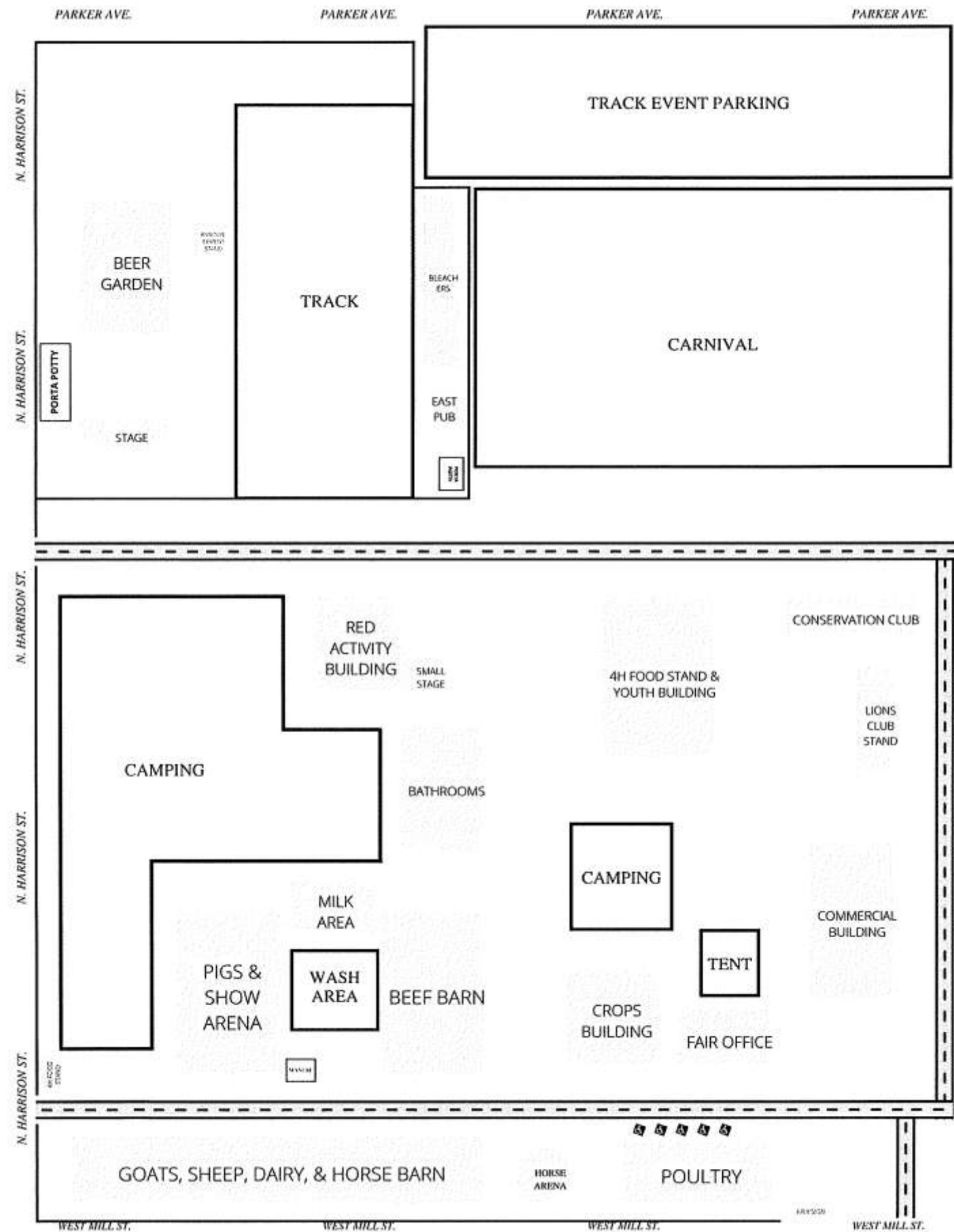
- | | |
|------------------------|---------------|
| • Animal Vet Science | • Clothing |
| • Flowers | • Swine |
| • Plant & Soil Science | • Woodworking |
| • Natural Science | • Electricity |

Sunday, August 3, 2025

Exhibits MUST remain in place until 4:00 p.m. Exhibits removed prior to 4:00p.m. may result in loss of premium.

4:00 p.m. - 6:00 p.m.

ALL exhibits animal and non-animal must be taken home at this time



2025 Buffalo County Fair Judging Schedule

Pre-Fair Events

Wednesday, June 18 - 6:00pm Foods Revue (Roger Marten Community Center)
 Wednesday, July 16 - 6:00pm Clothing Revue (Roger Marten Community Center)
 Saturday, July 19 - 9:00am Dog Show (Fairgrounds // Show Arena)
 Saturday, July 19 - 12:00pm Cat & Small Animal Show (Fairgrounds // Crops Building)
 Saturday, July 19 - 1:30pm Exotic Animal Show (Buffalo County Fairgrounds // Dairy Barn)
 Saturday, July 26 - 9:00am Equine Show (Midnight Riders Show Arena)

Wednesday, July 30, 2025

6:00 - 8:00pm Poultry Pullorum Testing (Football Field Parking Lot)

Thursday, July 31, 2025

9:00am Cloverbud (Red Activity Building)
 2:00pm Poultry (Poultry Barn)
 5:00pm Flowers and Houseplants (Crops Building)
 5:00pm Plant and Soil Science // Crops (Crops Building)
 5:00pm Plant and Soil Science // Garden (Crops Building)
 5:00pm Natural Science (Crops Building)
 5:00pm Swine (Show Arena)
 5:00pm Clothing (Youth Building)
 5:00pm Animal Science (Crops Building)
 5:00pm Woodworking and Electricity (Crops Building)
 5:00pm Computers (Youth Building)

Friday, August 1, 2025

9:00am Beef (Show Arena)
 9:00am Rabbits (Poultry Barn)
 *Rabbit Pee Wee Show (Poultry Barn) - Following the Rabbit Show
 9:00am Family Living & Child Development (Youth Building)
 9:00am Knitting and Crocheting (Youth Building)
 9:00am Photography (Youth Building)
 9:00am Mechanical Science (Crops Building)
 9:00am Cultural Arts (Youth Building)
 9:00am Communications (Youth Building)
 9:00am Health, Social, and Political Science (Youth Building)
 9:00am Youth Leadership (Youth Building)
 9:00am Foods and Nutrition (Youth Building)
 9:00am Booths (Crops Building)
 9:00am Home Environment (Youth Building)
 12:30pm Meat Goats and Dairy Goats (Show Arena)
 1:00pm Sheep (Show Arena)

Saturday, August 2, 2025

9:00am Dairy (Show Arena)

Post-Fair Events

Tuesday, August 5 - 9:00am Carcass Judging (Gunderson Food Service)
 Wednesday, August 6 - 7:00pm Carcass Show (Gunderson Food Service)

MARK YOUR CALENDARS

4-H AVIAN QUIZ BOWL CONTEST

SEPT. 27, 2025

REGISTRATION DEADLINE: SEPT. 1, 2025

**COLUMBIA COUNTY
FAIRGROUNDS
PORTAGE, WI**

SEE POST FOR MORE INFORMATION



Extension
UNIVERSITY OF WISCONSIN-MADISON

If you love poultry, working as a team, and having fun - this contest is for you! Register until September 1st for the WI State 4-H Avian (Poultry) Quiz Bowl Contest happening on September 27th at the Columbia County Fairgrounds in Portage, WI. More information found at :

<https://4h.extension.wisc.edu/.../small.../poultry-project/...>

WI 4-H STATE DOG OBEDIENCE & SHOWMANSHIP SHOW

**REGISTRATION
DEADLINE:
JULY 15TH**

**SHOW WILL BE HELD ON SEPT. 27-28
LANGLADE CO. FAIRGROUNDS; ANTIGO**



Extension
UNIVERSITY OF WISCONSIN-MADISON





Youth who join 4-H are often excited about the many, many projects they can choose to explore. There are so many Sparks (or things they want to learn about)! Yet, if their Spark doesn't have a local project leader to support their learning, that excitement can turn to questions. They may not know how to get started on their own. Clover to the rescue!! Clover is an online smorgasbord of sparks, interactive activities, and fun. It was created by the National 4-H Council in collaboration with more than 100 universities throughout the United States. And it's FREE and ready for youth, parents, and educators to dive into. **Go to 4-h.org/clover**

4-H Volunteer Information and Resources - we have provided loads of great information to help you feel comfortable and confident about the basics of 4-H . Explore the Volunteer Resources website at:

<https://4h.extension.wisc.edu/resources/volunteer-resources/>



**SCAN THE QR CODE
AND SHOW YOU ARE
4-EVER GREEN**



Check Out These Event Calendars

The calendars below show events available in surrounding areas and statewide. To filter by county or event type, use the check boxes on the left to narrow the results.

* To find 4-H specific events see this site

<https://4h.extension.wisc.edu/opportunities/calendar/>

* To find workshops, classes and other events hosted by University of Wisconsin-Extension see this site:

<https://extension.wisc.edu/events/>

Badger Talks is pleased to present a LIVE series of talks on topics that intend to inspire, delight, and pleasantly distract in a time we are all needing positive experiences. Tune in to hear experts on a variety of interesting and engaging topics. For more information see:

<https://badgertalks.wisc.edu/badger-talks-live/>





2025
Wisconsin
Farm
Technology
Days
At Clinton
Farms

Bear Creek, Wisconsin
August 5-6-7, 2025

[WI FARM TECH DAYS WEBSITE](http://www.wifarmtechdays.com)



What do you call a frog
with no hind
legs?



Unhappy

JULY IS NATIONAL
ICE CREAM MONTH

Email me (gwen.prom@wisc.edu) with
your **FAVORITE** flavor and I will post the
most popular in next month's Pacer!



